

# Configure Callegra Servers for Daylight Savings Time in the US in 2007

This document provides information for configuring your Callegra server running on Windows 2000 or 2003 to adjust to the new daylight savings time changes coming in effect in March 2007. It provides download locations and instructions for Callegra Servers running on Windows 2000 Servers as Microsoft does not provide an automatic update to resolve 2007 daylight savings time changes. It also provides instructions on how to update Callegra Servers running on Windows 2003 Servers when an automatic update is not available on that server. For Windows 2003 users, automatic updates are recommended when available.

Topics include:

- “Introduction to Daylight Savings Time Changes Enacted by United States Congress”
- “Frequently Asked Questions” on page 2
- “Update Windows 2003 Servers Manually” on page 3
- “Update Windows 2000 Servers Manually” on page 4

---

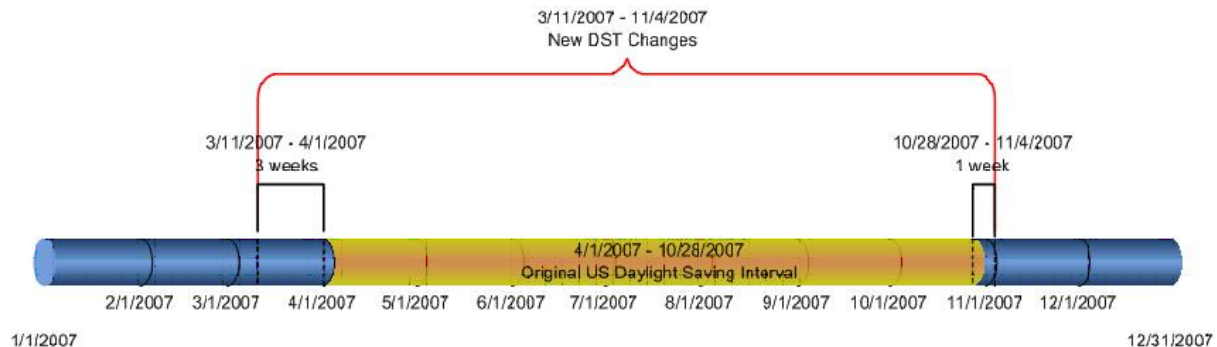
## Introduction to Daylight Savings Time Changes Enacted by United States Congress

In August of 2005 the United States Congress passed the Energy Policy Act, which changes the dates of both the start and end of daylight savings time (DST). In 2007, when this law goes into affect, DST starts three weeks earlier (2:00 A.M. on the second Sunday in March) and ends one week later (2:00 A.M. on the first Sunday in November).

**Table 1: Daylight Savings Time Change Compared**

Daylight Savings Time Change Compared with Previous Schedule	Daylight Savings Time Start Date	Daylight Savings Time End Date
2007 with No Change	<b>First Sunday of April</b> <i>April 1, 2007</i>	<b>Last Sunday of October</b> <i>October 28, 2007</i>
2007 with New Changes	<b>Second Sunday of March</b> <i>March 11, 2007</i>	<b>First Sunday of November</b> <i>November 4, 2007</i>

**Figure 1-1. New Daylight Savings Time Changes - March 11 through November 4, 2007**



---

# Frequently Asked Questions

- “What happens if I don’t do anything?”
- “Who is affected?” on page 2
- “What geographical areas are affected by Daylight Standard Time?” on page 3

## ***What happens if I don’t do anything?***

If no update is applied, all time is incorrect on calendars, messages, all applications, and so forth for the three week time period between March 11, 2007 and April 1, 2007 and again for a week in the fall between October 28, 2007 and November 4th, 2007.

The Callegra voicemail application uses the system time derived from the Windows operating system, whether that is Windows 2000 server or Windows 2003 server. If the Time Zone information is not updated to reflect the change outlined in the Energy Policy Act, the consequence is that all messages received for the three week period reflect the incorrect time, off by one hour. In addition, when Standard Time returns one week later, the first Sunday in November, the messages received during the one week period from the last Sunday in October until the first week in November are incorrectly time stamped. Without making the changes outlined in this document, voice mail users are confused thinking that messages are delayed for a period of one hour or messages are delivered with a time stamp one hour later than the message currently is delivered. For example, a message delivered at 8:00 AM might have a time stamp of 9:00 AM.

## ***Who is affected?***

The change in DST impacts many products that rely on automatic date and time settings. Some of the products affected include:

- Home electronics, such as VCRs, DVRs, clocks, telephones, PDAs
- Computer software calendar and scheduling applications (Outlook, Exchange, or third party calendars)
  - If you use your personal computer to manage a calendar, during the extended DST weeks, meetings are off by 1 hour.
  - Any server that is running Callegra is affected. If your Callegra system is not receiving regular Microsoft updates for any reason then, you must apply the fix to all Callegra voicemail server(s) manually.

For a complete list of affected Microsoft software, see [http://support.microsoft.com/gp/dst\\_topissues#a5](http://support.microsoft.com/gp/dst_topissues#a5).

While the change in daylight savings time applies to U.S. and Canada, the change might affect users based outside of these countries.

- Mexico is not following the new DST 2007 rules with the U.S. and Canada. Accordingly, systems configured to use U.S. time zones (for example, Pacific Time) need to change their system configurations to use the new time zones in Mexico.
- Companies or organizations with operations, customers, or vendors based in the U.S. or Canada are affected.
- Companies or organizations that interact or integrate with systems that are based in the U.S. or Canada or rely on date/time calculations might be affected.
- Users in U.S. areas that do not observe DST (see below), but who travel to or interact with people in locations that do follow DST are affected and should install the Windows operating system update.

Areas affected by this change in daylight savings time:

- All of the United States except: Arizona, Hawaii, Puerto Rico, the U.S. Virgin Islands, and American Samoa.
- Canada and the United States share DST
- Mexico is not following the new DST 2007 rules

More information about geographical areas is provided in the next section.

## ***What geographical areas are affected by Daylight Standard Time?***

The following list shows some of the major changes that have occurred for daylight savings time:

- **United States** — Beginning in the spring of 2007, the start dates and end dates for daylight savings time (DST) will change to comply with the Energy Policy Act of 2005. DST dates for 2007 in the United States and Canada starts three weeks earlier (2:00 A.M. on the second Sunday in March), and ends one week later (2:00 A.M. on the first Sunday in November).
- **Canada** — All provinces in Canada that use daylight savings time have adopted the same changes as the United States.
- **Mexico** — Because Mexico is not adopting the DST change made in the United States. Therefore, separate time zone definitions are required for Mexico.
- **Uruguay** — A new time zone is available for Montevideo, Uruguay.
- **Brazil** — There are different DST dates in Brazil.
- **Israel** — There are different DST dates in Israel.
- **Egypt** — There are different DST dates in Egypt.
- **Sri Lanka** — The local time offset has changed from UTC+6:00 to UTC+5:30.

---

## **Update Windows 2003 Servers Manually**

The recommended method to resolve time zone issues is to make sure the your 2003 server is getting windows updates. If that is not possible, download the update from the Callegra FTP site for Windows 2003 servers.

To update Windows 2003 Servers manually:

1. Download the Update for Windows Server 2003 package (Release Date: November 21, 200) at [ftp://ftp.callware.com/Department%20Of%20Defense/MS\\_DST2007/WindowsServer2003-KB931836-x86-ENU.exe](ftp://ftp.callware.com/Department%20Of%20Defense/MS_DST2007/WindowsServer2003-KB931836-x86-ENU.exe)
2. Log in with an account that has administrative privileges and execute the update package. You do not have to restart the computer after you install this update.

---

# Update Windows 2000 Servers Manually

Microsoft does not provide an automatic update for Windows 2000 servers. Callegra servers running on top of Windows 2000 servers must manually update these servers.

Here is some information to understand prior to attempting to update Windows 2000 Servers.

## Windows Time Zones

Windows uses the registry to store time zone information:

- A time zone database with information on all the time zones in windows
- A control set time zone information key with the configuration for the time zone that is currently in use.

## Windows Time Zone Database and Current Control Set Time Zone Information

The Windows time zone database contains data for all time zones in Windows which is located at `HKEY_LOCAL_MACHINE\SOFTWARE\Microsoft\Windows NT\CurrentVersion\Time Zones`

Each time zone has a registry key with registry values including:

- Display text
- Daylight and Standard names
- The TZI value which contains the DST start and end dates

The Current Control Set in the registry contains current system configuration information. A time zone information registry key contains time zone settings for the time zone in use, located at:

`HKEY_LOCAL_MACHINE\SYSTEM\CurrentControlSet\Control\TimeZoneInformation`

Updating Windows time zones

Windows time zones must be updated following a defined process to be sure that accurate information is stored and used by windows

- Update the time zone information in the database (to be sure that the database is current for third-party applications that read the database directly, or when changing Windows to a different time zone)
- Refresh the information in the Current Control Set (Windows will copy the updated information from the database to the current control set).

## Two Methods for Updating 2000 Servers Manually

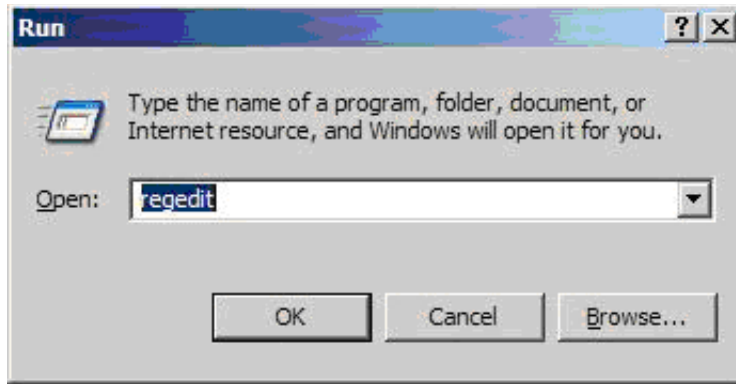
There are two methods for configuring the DST changes for the year 2007 for Windows 2000. Use the Time Zone Editor Tool or the Registry File Tool both provided by Microsoft.

To update Windows 2000 Servers manually:

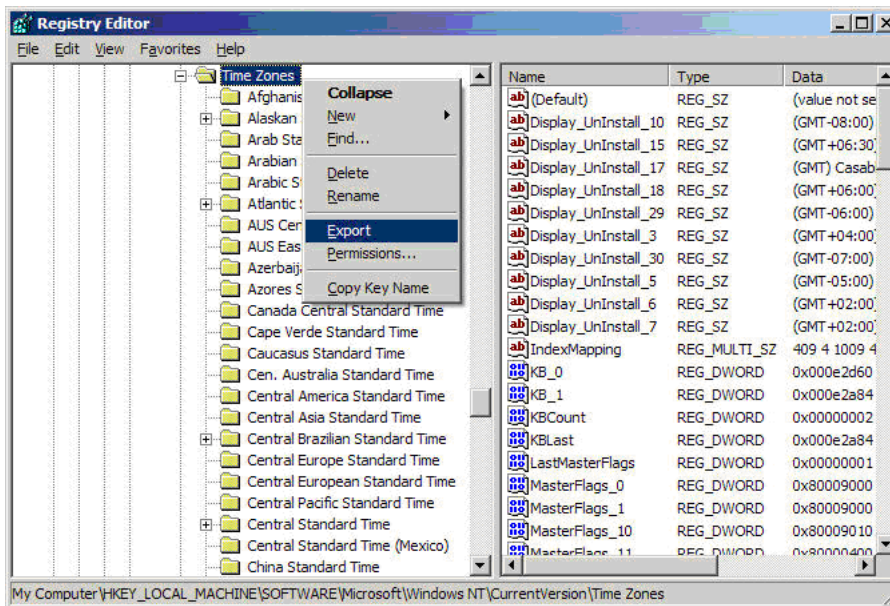
1. "Back up the Registry." See page 5.
2. Use one of the following methods:
  - "Method 1: Use the Time Zone Editor Tool to Update Callegra Servers on Windows 2000." See page 6.
  - "Method 2: Use the Registry File to Update Callegra Servers on Windows 2000." See page 7.
3. "Confirm Time Zone Changes Are Applied." See page 8.

## Back up the Registry

1. Click Start, click Run, type regedit, and then press ENTER.



2. Locate and then click the following registry key:  
HKEY\_LOCAL\_MACHINE\SOFTWARE\Microsoft\Windows NT\CurrentVersion\Time Zones



3. On the File menu, click Export.
4. In the File name box, type OriginalTZDatabase.reg, click on Desktop for the location and then click Save.
5. Locate and then click the following registry key:  
HKEY\_LOCAL\_MACHINE\SYSTEM\CurrentControlSet\Control\TimeZoneInformation
6. On the File menu, click Export.
7. In the File name box, type OriginalTZInfo.reg, click on Desktop for the location and then click Save.

## Use One of Microsoft Updating Methods

You can choose one of the following tools to update the Callegra Servers:

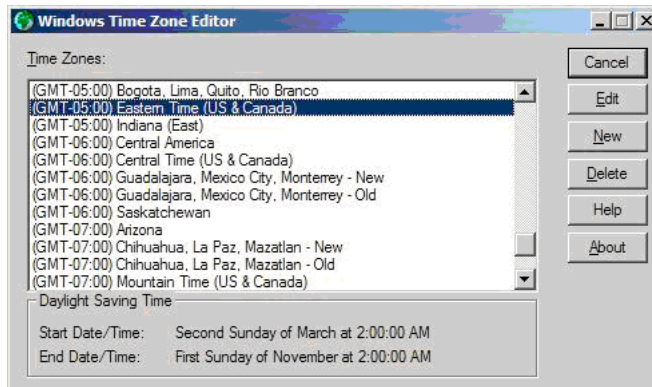
- “Method 1: Use the Time Zone Editor Tool to Update Callegra Servers on Windows 2000” on page 6
- “Method 2: Use the Registry File to Update Callegra Servers on Windows 2000” on page 7

## Method 1: Use the Time Zone Editor Tool to Update Callegra Servers on Windows 2000

The Time Zone Editor tool will allow you to modify one entry at a time. The tool is both simple and easy to use, but changes will have to be made to each time zone you want updated.

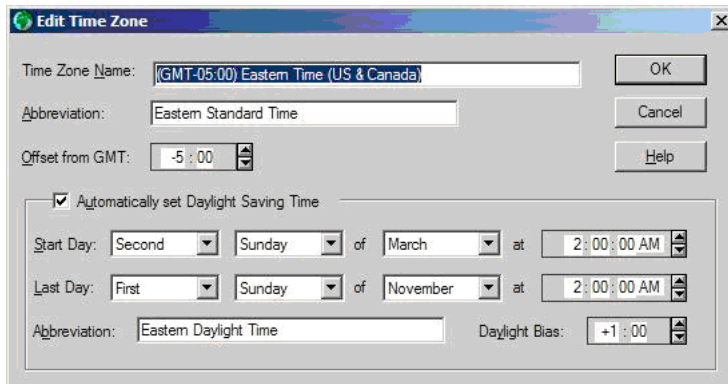
To update the Windows 2000 server using the Time Zone Editor Tool:

1. Log in with an account that has administrative privileges.
2. Back up the registry. See "Back up the Registry" on page 5 for instructions.
3. Download and run the Time Zone Editor Tool (tzedit.exe).
  - a. Download the Time Zone Editor Tool at:  
[ftp://ftp.callware.com/Department%20of%20Defense/MS\\_DST2007/tzedit.exe](ftp://ftp.callware.com/Department%20of%20Defense/MS_DST2007/tzedit.exe)
  - b. Review [KB article 928388 \(http://support.microsoft.com/kb/928388/en-us\)](http://support.microsoft.com/kb/928388/en-us)
  - c. Log in with an account that has administrative privileges.
4. Click Run to install the Time Zone Editor.
5. Go to install location: Default location: C:\Program Files\TZEdit.exe.
6. Execute TZEdit.exe to start Time Zone Editor.
7. In the Time Zones list, select a time zone, and then click Edit. For example, click (GMT-08:00) Pacific Time (US & Canada); Tijuana, and then click Edit.



8. In the Edit Time Zone dialog box, click to select the Automatically set daylight savings time check box.
  9. Specify the correct daylight savings time start date and end date. To do this, follow these steps:
    - a. In the Start Day box, click the number of the day, the corresponding day of the week, and the month that you want. For example, click Second, click Sunday, and then click March.
    - b. Select the time that you want to start daylight savings time. For example, select 2:00 A.M.
    - c. In the Last Day box, click the number of the day, the corresponding day of the week, and the month that you want. For example, click First, click Sunday, and then click November.
    - d. Select the time that you want to end daylight savings time. For example, select 2:00 A.M.
    - e. In the Daylight Bias list, select how long you want the time to change when daylight savings time is in effect. For example, to set the clock forward 1 hour, leave the default setting of +1:00.
    - f. Click OK.
    - g. Select another time zone that has changed, and then repeat steps a through e. For more information about the time zones that have changed, click the following article number to view the article in the Microsoft Knowledge Base:  
[931836 February 2007 cumulative time zone update rollup for Microsoft Windows operating systems](http://support.microsoft.com/kb/931836/)  
<http://support.microsoft.com/kb/931836/>
- Repeat steps a through f for every affected time zone. When you have finished, click Close.
- h. Click Start, Settings, Control Panel, and double-click Date/Time.
  - i. Click the Time Zone tab.
  - j. Select a different time zone than the (GMT-08:00) Pacific Time (US & Canada); Tijuana time zone, and then click Apply.

- k. Click (GMT-08:00) Pacific Time (US & Canada); Tijuana, and click OK.



**Note:** Steps j and k are required for the new changes to take effect.

In this example, steps a through f update the time zone database. Steps h through k force Windows to read the time zone database and copy the updated information into the TimeZoneInformation registry key in the current control set.

10. Confirm the time zone changes are applied correctly. See “Confirm Time Zone Changes Are Applied” on page 8.

## Method 2: Use the Registry File to Update Callegra Servers on Windows 2000

To use the registry file:

1. Log in with an account that has administrative privileges.
2. Back up the registry. See “Back up the Registry” on page 5 for instructions.
3. Download the Registry File Tool (DST2007RegUpdate.zip) to update Callegra Servers on Windows 2000 at: <ftp://ftp.callware.com/Department%20Of%20Defense/DST2007RegUpdate.zip>
4. Read [KB article 914387 \(http://support.microsoft.com/kb/914387/en-us\)](http://support.microsoft.com/kb/914387/en-us).
5. Unzip this file to the desktop.
6. Open the folder and execute the DST2007Update\_Win2k.cmd file. This runs the Time Zone registry update file updating the 32 time zones that are affected in the DST 2007 Energy Policy act. It also runs a script to automatically reload the TimeZoneInformation registry key for the CurrentControlSet.
7. Confirm the time zone changes are applied correctly. See “Confirm Time Zone Changes Are Applied” on page 8.

## Confirm Time Zone Changes Are Applied

Confirm that the time zone changes are applied: Use the Date and Time item in Control Panel to make sure that the DST rule that in effect on the computer matches the start dates and end dates that are described in the following Knowledge Base article: 931836 February 2007 cumulative time zones update rollup for Microsoft Windows operating systems.

This example included from KB article 931836 uses Pacific Standard Time. The following configuration details for this time zone are copied from that article. See Table 12 on page 8.

**Table 12: Example: Pacific Standard Time**

Registry subkey name	Display name	Daylight name	Standard name	DST start	DST end	Value of TZI subkey
Pacific Standard Time	(GMT-08:00 ) Pacific Time (US & Canada)	Pacific Daylight Time	Pacific Standard Time	Second Sunday in March at 02:00:00	First Sunday in November at 02:00:00	TZI=hex:e0,01,00,00,00,00,00,c4,ff,ff,00,00,0b,00,00,00,01,00,02,00,00,00,00,00,00,00,00,03,00,00,00,02,00,02,00,00,00,00,00,00

Important: Close all open applications before you start this test.

To verify the changes by using the Date and Time item in Control Panel, follow these steps:

1. Click Start, Run, type control timedate.cpl, /Z, and press ENTER.
2. Click the Time Zone tab, click to select the (GMT-08:00 Pacific Time (US & Canada) time zone, and click Apply.
3. Click the Date & Time tab.
4. Set the date and time to one minute before the start of DST. For example, change the date and time to March 11, 2007 at 1:59 A.M.
5. Wait one minute. Confirm that the clock moves to 3:00 A.M. instead of 2:00 A.M.
6. Set the date and time to one minute before the end of DST. For example, change the date and time to November 4, 2007 at 1:59 A.M.
7. Wait one minute. Confirm that the clock moves to 1:00 A.M. instead of 2:00 A.M.
8. Set the date and time back to the correct setting.

---

## References

For more information, click the following article numbers to view the articles in the Microsoft Knowledge Base:

[KB article 256986 \(http://support.microsoft.com/kb/256986\)](http://support.microsoft.com/kb/256986) Description of the Microsoft Windows registry

[KB article 914387 \(http://support.microsoft.com/kb/914387/en-us\)](http://support.microsoft.com/kb/914387/en-us). February 2007 Cumulative Time Zone Update Rollup for Microsoft Windows Operating Systems

[KB article 310516 \(http://support.microsoft.com/kb/310516\)](http://support.microsoft.com/kb/310516) How to Add, Modify, or Delete Registry Subkeys and Values by using a Registration Entries (.reg) file